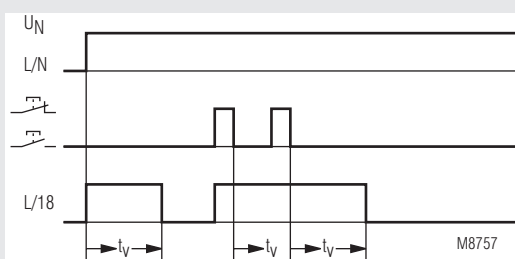


## MINITIMER Fan Control Timer RK 8810/005



- According to EN 60 669-1, EN 60 669-2-1
- Setting range 0.5 ... 10 min
- After the light the fan switched on
- Switch for continuous light of the exhaustor on unit
- Contact: 16 A
- Width 17.5 mm

### Function Diagram



### Approvals and Markings



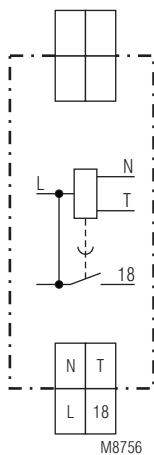
### Application

Control of fans

### Function

The fan starts approx. 1 min. after the light is switched on. When the light is switched off the fan will continue to run for the adjusted delay time.

### Circuit Diagram



RK 8810.41/005

### Notes

Unit and push button have to be connected to the same phase (see connection diagram) The output contact is not volt free.

### Maintenance

Inspection test and maintenance intervals are to be performed annually.

### Technical Data

#### Time Circuit

**Time range:** 0.5 ... 10 min  
**Repeat accuracy:** < 1 % of setting value

#### Input

**Nominal voltage  $U_N$ :** AC 230 V  
**Voltage range:** 0.9 ... 1.1  $U_N$   
**Nominal consumption:** approx. 5 VA  
**Nominal frequency:** 50 / 60 Hz

#### Output

**Contacts:** 1 NO contact, delay  
**Contact opening gap:** > 3 mm  
**Thermal current  $I_{th}$ :** 16 A  
**fan load:** 200 VA  
**Short circuit strength max. fuse rating:** 16 AgL IEC/EN 60 947-5-1  
**Mechanical life:** > 1 x 10<sup>6</sup> switching cycles

### Connection Terminals

Terminal designation	Signal designation
L, N	Auxiliary voltage AC
T, L	Button
L, 18	Contact output

## Technical Data

### General Data

**Nominal operating mode:** impulse operation / continuous operation

### Temperature range

Operation: - 20 ... + 50°C

Storage: - 40 ... + 70°C

### Clearance and creepage distances

rated impulse voltage /

pollution degree: 4 kV / 2

IEC 60 664-1

### EMC

Electrostatic discharge (ESD): 8 kV (air)

IEC/EN 61 000-4-2

HF irradiation

80 MHz ... 1 GHz: 10 V / m

IEC/EN 61 000-4-3

1 GHz ... 2.7 GHz: 10 V / m

IEC/EN 61 000-4-3

Fast transients: 2 kV

IEC/EN 61 000-4-4

Surge voltages

between

wires for power supply: 1 kV

IEC/EN 61 000-4-5

between wire and ground: 2 kV

IEC/EN 61 000-4-5

HF wire guided

0.15 ... 80 MHz: 10 V

IEC/EN 61 000-4-6

Interference suppression:

Limit value class B

EN 55 011

### Degree of protection:

Housing: IP 40

IEC/EN 60 529

Terminals: IP 20

IEC/EN 60 529

### Enclosure:

Thermoplast with V0-behaviour according to UL subj. 94

### Vibration resistance

Amplitude 0,35 mm

frequenzy 10 ... 55 Hz IEC/EN 60 068-2-6

20 / 050 / 04 IEC/EN 60 068-1

EN 50 005

DIN 46 228-1/-2/-3/-4

### Wire connection:

#### Fixed screw terminals

Cross section: 0.5 ... 10 mm<sup>2</sup> (AWG 20 - 8) solid or

0.5 ... 6 mm<sup>2</sup> (AWG 20 - 10)

stranded wire with and without ferrules

10 mm

Stripping length:

#### Fixing torque:

0.8 Nm EN 60 999-1

#### Wire fixing:

Cross-head screw / M3.5 box terminals

#### Mounting:

DIN rail IEC/EN 60 715

#### Weight:

approx. 80 g

### Dimensions

**Width x Height x Depth:** 17.5 x 90 x 66 mm

## Standard Type

RK 8810.41/005 AC 230 V 50 / 60 Hz 0.5 ... 10 min

Article number: 0058996

• Output: 1 NO contact, delay

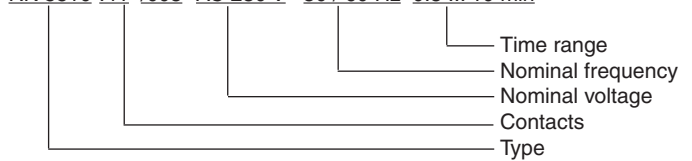
• Nominal voltage  $U_N$ : AC 230 V

• Timer range: 0.5 ... 10 min

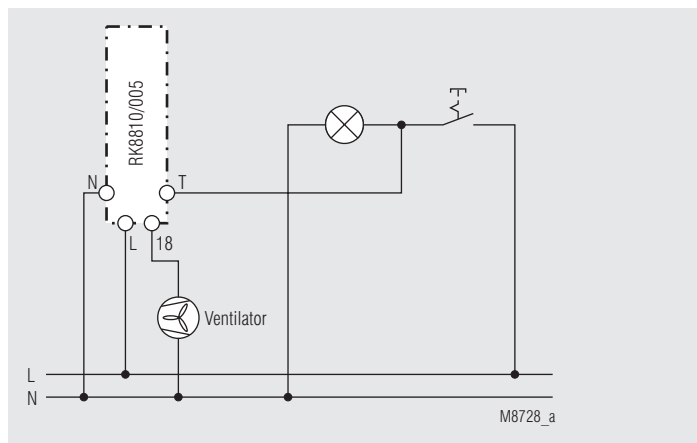
• Width: 17.5 mm

## Ordering Example

RK 8810 .41 /005 AC 230 V 50 / 60 Hz 0.5 ... 10 min



## Application Example



circuit L on push button