

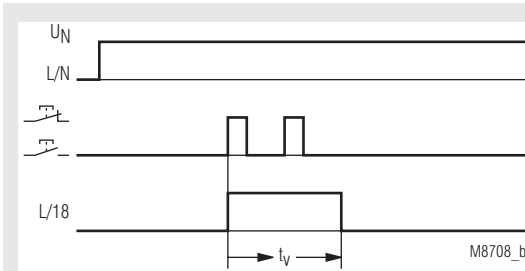
# Installation Technique

## MINITIMER Staircase Lighting Time Switch RK 8810/001



- According to EN 60 669-1, EN 60 669-2-1
- Setting range 0.5 ... 10 min.
- For 3-wire circuit N on push button
- Can not be retriggered
- Switch for continuous light on unit
- Contact: 16 A
- Width 17.5 mm

### Function Diagram



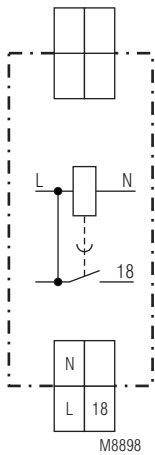
### Approvals and Markings



### Application

- Staircase lighting time switch
- Timer, release delay

### Circuit Diagram



RK 8810.41/001

### Notes

Unit and push button have to be connected to the same phase (see connection diagram) The output contact is not volt free.

### Maintenance

Inspection test and maintenance intervals are to be performed annually.

### Technical Data

#### Time Circuit

- Time range:** 0.5 ... 10 min  
**Repeat accuracy:** < 1 % of setting value

#### Input

- Nominal voltage  $U_N$ :** AC 230 V  
**Voltage range:** 0.9 ... 1.1  $U_N$   
**Nominal consumption:** approx. 5 VA  
**Nominal frequency:** 50 / 60 Hz

- Permitted residual current caused by glow lamps in the push buttons:** depending on load current  
**Min. pulse duration:** 30 ms

### Connection Terminals

Terminal designation	Signal designation
L, N	Auxiliary voltage AC
L, 18	Button
L, 18	Contact output

## Technical Data

### Output

**Contacts:** 1 NO contact, delay not floating  
**Contact opening gap:** > 3 mm  
**Thermal current  $I_{th}$ :** 16 A  
**Switching capacity with lamp load**

Fluorescent lamp load

Duo switching:

(series compensated) 2 x 20 lamps with 58 W each

Glow lamp load: 2000 W

**Short circuit current strength:** > 700 A

**Short circuit strength**

**max. fuse rating:** 16 AgL IEC/EN 60 947-5-1

**Mechanical life:** > 1 x 10<sup>6</sup> switching cycles

## General Data

**Nominal operating mode:** impulse operation / continuous operation

**Temperature range**

Operation: - 20 ... + 50°C

Storage: - 30 ... + 60°C

**Altitude:** < 2.000 m

**Clearance and creepage distances**

rated impulse voltage /

pollution degree: 4 kV / 2 IEC 60 664-1

**EMC**

Electrostatic discharge (ESD): 8 kV (air) IEC/EN 61 000-4-2

HF irradiation

80 MHz ... 1 GHz: 10 V / m IEC/EN 61 000-4-3

1 GHz ... 2.7 GHz: 10 V / m IEC/EN 61 000-4-3

Fast transients: 2 kV IEC/EN 61 000-4-4

Surge voltages

between

wires for power supply: 1 kV IEC/EN 61 000-4-5

between wire and ground: 2 kV IEC/EN 61 000-4-5

HF wire guided

0.15 ... 80 MHz: 10 V IEC/EN 61 000-4-6

Interference suppression: Limit value class B EN 55 011

**Degree of protection:**

Housing: IP 40 IEC/EN 60 529

Terminals: IP 20 IEC/EN 60 529

**Enclosure:**

Thermoplast with V0-behaviour according to UL subj. 94

**Vibration resistance**

Amplitude 0,35 mm

frequenzy 10 ... 55 Hz IEC/EN 60 068-2-6

20 / 050 / 04 IEC/EN 60 068-1

**Climate resistance:**

**Terminal designation:** EN 50 005

**Wire connection:**

DIN 46 228-1/-2/-3/-4

**Fixed screw terminals**

Cross section:

0.5 ... 10 mm<sup>2</sup> (AWG 20 - 8) solid or

0.5 ... 6 mm<sup>2</sup> (AWG 20 - 10)

stranded wire with and without ferrules

Stripping length:

10 mm

**Fixing torque:**

0.8 Nm EN 60 999-1

**Wire fixing:**

Cross-head screw / M3.5 box terminals

**Mounting:**

DIN rail IEC/EN 60 715

**Weight:**

approx. 80 g

## Dimensions

**Width x Height x Depth:** 17.5 x 90 x 66 mm

## Standard Type

RK 8810.41/001 AC 230 V 50 / 60 Hz 0.5 ... 10 min

Article number: 0058992

• Output: 1 NO contact, delay

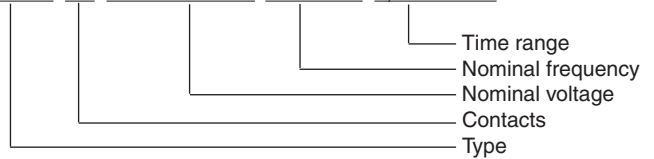
• Nominal voltage  $U_N$ : AC 230 V

• Timer range: 0.5 ... 10 min

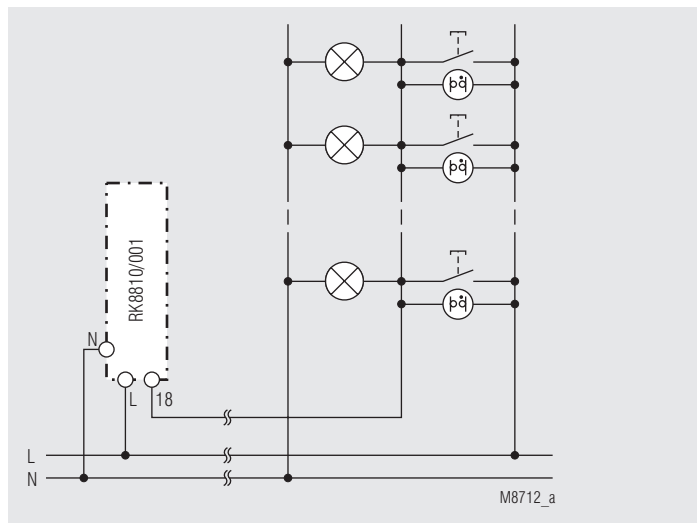
• Width: 17.5 mm

## Ordering Example

RK 8810 .41 /001 AC 230 V 50 / 60 Hz 0.5 ... 10 min



## Application Example



3-wire circuit N on push button